

SERVICE MANUAL 440-1015 FOR



HYDRAULIC BRAKE ACTUATOR KIT (DOT-3 / DOT-4 BRAKE FLUID)

This Document is Applicable to:

KIT PART NUMBER	DESCRIPTION
496-166	BATTERY PACK
381-7022	IN-CAB CONTROLLER KIT**
381-7023	ACTUATOR KIT 1000 PSI W/ IN-CAB CONTROLLER**
381-7024	ACTUATOR KIT 1000 PSI W/O IN-CAB CONTROLLER
381-7049	ACTUATOR KIT 1200 PSI W/ IN-CAB CONTROLLER**
381-7050	ACTUATOR KIT 24V 1000 PSI W/ IN-CAB CONTROLLER**
381-7051	ACTUATOR KIT 1200 PSI W/O IN-CAB CONTROLLER
381-7052	ACTUATOR KIT 1600 PSI W/O IN-CAB CONTROLLER
381-7053	ACTUATOR KIT 1600 PSI W/ IN-CAB CONTROLLER**
381-7054	ACTUATOR KIT 24V 1600 PSI W/O IN-CAB CONTROLLER
381-7055	ACTUATOR KIT 24V 1600 PSI W/ IN-CAB CONTROLLER**
381-7056	ACTUATOR KIT 24V 1000 PSI W/O IN-CAB CONTROLLER

**** IMPORTANT:** This actuator will not function correctly with any other brand or type of brake controller.

Carlisle Industrial Brake and Friction
1031 East Hillside Drive
Bloomington, IN 47401
Phone (812) 336-3811 Fax (812) 334-8775

Manual 440-1015 – Table of Contents

<u>SECTION</u>	<u>DESCRIPTION</u>	<u>PAGE</u>
A.	Features	2
B.	Compatibility	2
C.	System Components	
	- Trailer Mounted Actuator	2
	- Trailer Mounted Brake Battery	3
	- Break-Away Switch	3
	- In-Cab Controller	3
D.	Important Safety Messages!	4
E.	Installation Instructions – Trailer Actuator	5
F.	Actuator Wiring	6
G.	Installation Check Procedures	7
H.	DOT Inspection Note	8
I.	Mounting Dimensions / Replacement Parts List	9
J.	Trouble Shooting Guide	10
K.	Carlisle Limited Warranty and Limitation of Liability	11

A. Features:

The CARLISLE trailer brake actuator is a microprocessor-based 12 Volt DC system (**if using a 24 Volt DC system see Section F. Actuator Wiring – 24 Volt Electrical Wiring Diagram**) for use on single, two, and three axle trailers equipped with hydraulic brakes. This unit requires a 17 amp-hour trailer brake “deep cycle” battery and an emergency breakaway switch. CARLISLE recommends a CARLISLE Battery Pack (kit number 496-166) complete with a 12 VDC, 17 A/H, “deep cycle” battery, enclosure, hardware, breakaway switch, instruction sheet, and straps.

The CARLISLE actuator is unique in that it is totally trailer mounted. The actuator connects to the wiring on the trailer and does not require any modifications or additions to the wiring on the tow vehicle. Any vehicle that can connect to the trailer and power the trailer’s lights can make use of the CARLISLE trailer brake actuator. The in-cab controller is provided by a pendant that plugs into the cigarette lighter receptacle (not an accessory power receptacle) on the tow vehicle. No modifications to tow vehicle or to the tow vehicle wiring are required to make the in-cab controller unit operate correctly. Multiple vehicles can share a single in-cab controller by simply moving the in-cab controller from one vehicle to another. Additional in-cab controller units are available and are compatible with all CARLISLE trailer brake actuators.

B: Compatibility:

The CARLISLE trailer brake actuator should function properly so long as the towing vehicle can power the running lights and stop lights on the towed trailer. **Note that vehicles and trailers that have amber turn signals typically require the use of a tail light converter to insure proper operation.** The CARLISLE actuator draws approximately 1 – 3 amps of power from the tail light circuit to power the on-board battery charger. On trailers with multiple running lights, it may be necessary to install a powered tail light converter to insure that adequate power is available to operate the trailer brake actuator.

C: System Components:

Trailer Mounted Actuator

The CARLISLE system is an electric/hydraulic brake actuator, which includes a microprocessor and an accelerometer. The accelerometer is used to sense the amount of braking being generated by the towing vehicle. Based on that input, the microprocessor then automatically adjusts the output of the unit to generate a comparable amount of trailer braking. Unlike a traditional electronic brake control, the electrical power required to actuate the trailer brakes is drawn entirely from the trailer mounted brake battery (“deep cycle”, 17-amp hour minimum capacity). To insure that the trailer brake battery remains fully charged at all times, a 3 amp battery charger is included as an integral part of the trailer mounted actuator. Power for that battery charger is drawn

from the running light circuit on the tow vehicle. Thus, it is critical that the tow vehicle running lights are on whenever the trailer is being towed. Note that it is also critical that the trailer brake battery is not connected to any other charging circuit on the tow vehicle. Connecting the trailer brake battery to a second charging source will cause sporadic operation and communication errors between the actuator and in-cab controller.

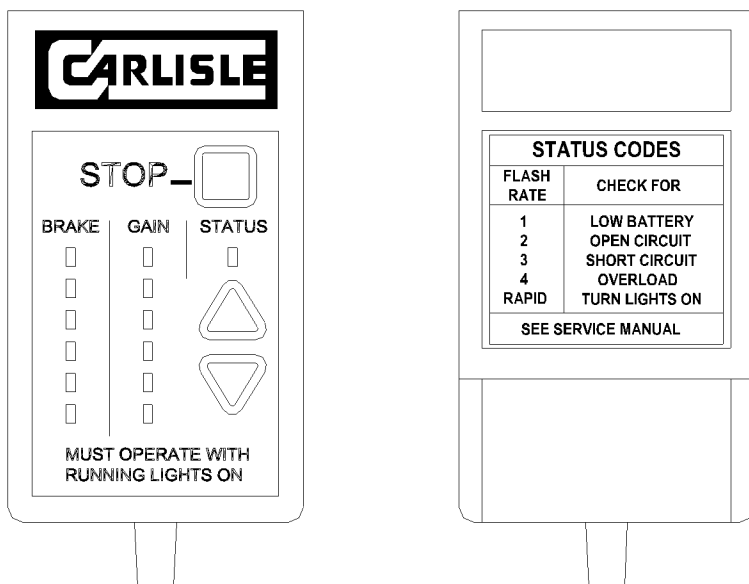
Trailer Mounted Brake Battery

All of the power for the trailer brake actuator is drawn from the trailer mounted trailer brake battery. For proper operation, the system needs a “deep cycle” battery with a minimum capacity of 17 amp-hours. Note that the trailer brake battery also provides power to the actuator in the event of an emergency breakaway.

Break-Away Switch

The system requires an emergency breakaway switch. The breakaway switch is mounted on the trailer and is connected electrically to the trailer brake battery and to the CARLISLE actuator. The switch is also connected mechanically to the tow vehicle. When a breakaway condition occurs, the plunger on the breakaway switch is pulled out by the tow vehicle thereby completing an electrical circuit between the trailer brake battery and the breakaway circuit on the CARLISLE actuator. When the CARLISLE actuator senses a breakaway condition, the trailer brakes are automatically applied at full power.

In-Cab Controller



The in-cab controller gives the vehicle operator a means to increase or decrease the amount of trailer braking. It also provides both audible and visible indications of any problem detected by the internal monitoring system. The in-cab controller is equipped with colored LEDs to indicate gain setting (green), brake output (red) and system problem status codes (yellow). It also has pushbutton switches to adjust the output of the trailer brakes versus the towing vehicle (i.e. gain) and to manually apply the trailer brakes. The in-cab controller is easily installed by inserting its power plug into the cigarette lighter receptacle (not an accessory power receptacle) on the tow vehicle and turning the running lights on. Note that the unit must be plugged in each time that the towing vehicle is started. The unit will automatically check to make sure that the running lights are on and that the system is functioning as designed. In the event that a problem is detected, the unit will flash the yellow status light on the face of the unit and will make a series of audible “beeps”. The number of beeps is an indication of the problem that the system has detected. Count the number of beeps and check the chart on the back of the unit to obtain direction on possible causes of the problem (see Section J. Trouble Shooting Guide). The unit must be unplugged each time the tow vehicle is taken out of service and the running lights are shut off. A series of rapid beeps from the unit is an indication that you either are driving without having your running lights on or that you forgot to unplug the unit when the vehicle was shut off.

In-Cab Controller operation is as follows:

GAIN SETTING- Press either the UP arrow to increase the amount of trailer braking or the down arrow to decrease the amount of trailer braking. The selected gain level will be shown by the number of green illuminated LED's on the face of the unit. One light corresponds to the lowest setting, six lights corresponds to the highest gain setting.

STOP BUTTON - Press the red square STOP button to manually apply the trailer brakes. Depending on the gain setting selected, 1 to 6 red LED's will illuminate to indicate the level of braking being generated. The brake lights on the trailer also automatically turn on whenever the manual brake button is depressed.

SYSTEM STATUS CODES - Yellow status LED flashes, audible alarm beeps:

<u># Of Beeps or Flashes</u>	<u>Error Indication</u>
1	Low Battery Voltage – trailer brake battery
2	Open Circuit - Internal Components (motor, solenoid).
3	Short Circuit - Internal Components (motor, solenoid).
4	Overload – actuator unit overheated
RAPID	Loss of Power – tail / running lights not turned ON or faulty connection to trailer.

D. IMPORTANT SAFETY MESSAGES!

WARNING! Thoroughly read and understand this manual before installation. Failure to properly follow this manual could cause a malfunction, resulting in possibly serious or fatal injuries and/or property damage.

WARNING! The brake system on the towed vehicle is intended only to supplement the tow vehicle brake system. At no time should the towed vehicle brake system be relied upon to stop the towing vehicle.

WARNING! All of the electrical power required to operate the trailer brakes is drawn from the trailer mounted brake battery. It is critical that the trailer brake battery is a “deep cycle” battery and has a minimum capacity of 17 amp hours. Operation with a weak or discharged battery can cause the actuator to malfunction, resulting in possibly serious or fatal injuries and/or property damage. Do not attempt to operate the unit if a low voltage condition is signaled.

WARNING! The CARLISLE Hydraulic brake actuator is not intended to function as a park brake. When stopped for extended periods of time, apply the towing vehicle park brake and release the brake pedal.

WARNING! Failure to properly install, protect, operate and maintain the actuator system can cause a malfunction resulting in possibly serious or fatal injuries and/or property damage.

WARNING! The tow vehicle / trailer tail & running lights MUST BE TURNED ON, BEFORE PERFORMING ANY TOWING, for the actuator to operate correctly, and for the breakaway battery to be recharged. Failure to turn the lights ON can cause the actuator to malfunction, or the breakaway battery to become discharged, resulting in possibly serious or fatal injuries and/or property damage.

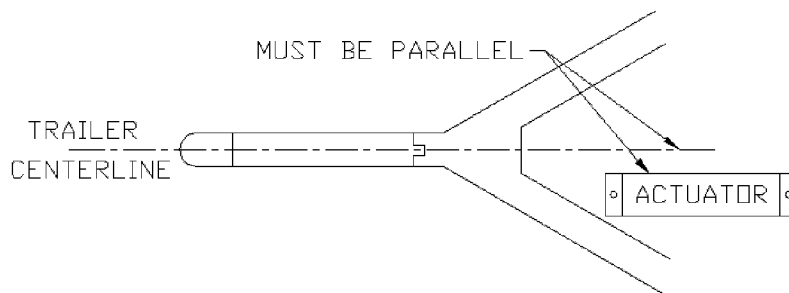
WARNING! Should any SYSTEM PROBLEM STATUS CODE signals occur, immediately stop the tow vehicle / trailer and make all necessary repairs (see Section J. Trouble Shooting Guide). Failure to properly maintain the actuator system can result in possibly serious or fatal injuries and/or property damage.

E. Installation Instructions – Trailer Actuator: **Before Starting**

1. The following materials are required to properly install the Hydrastar XL™ unit:
 - If your trailer is not already equipped with brake lines, you will need enough 3/16 inch diameter automotive brake line to connect the trailer brakes to the Hydrastar XL™ unit. (Note that ¼ inch diameter brake line is recommended for 3 axle trailers or for trailers where the total brake line length exceeds 25 feet). Where possible, steel tubing is preferred.
 - 4 pieces of #10 mounting hardware to mount the Hydrastar XL™ unit to the trailer.
 - 1 quart of DOT 3 or DOT 4 brake fluid (from a new, sealed container).
 - 1 emergency breakaway kit. The emergency breakaway kit must include a 12 VDC, 17 A/H, “deep cycle” battery (minimum).
 - Wire (See Section F. Actuator Wiring for proper wire size.)
2. Flush existing brake system and lines with mineral spirits (not mineral oil), DOT 3 or DOT 4 brake fluid prior to connecting the Hydrastar XL™ unit.
3. Examine all trailer brakes and associated brake lines and fittings to assure they are in good condition. Repair any leaks and replace worn or damaged brake lines, shoes or pads.
4. Inspect the trailer brakes to be sure they are properly adjusted. Consult your trailer owner’s manual for instructions on how to adjust the trailer brakes.
5. The Hydrastar XL™ unit contains sensitive electronics that must be protected. Drilling additional holes in the housing or electrostatically painting the Hydrastar XL™ unit, or welding anywhere on the Hydrastar XL™ unit will damage the unit making it inoperable and will void the manufacturer’s warranty. Always remove the Hydrastar XL™ from the trailer before doing any welding repair or modifications to the trailer structure.

Mounting the Trailer Brake Actuator, Trailer Brake Battery, and Emergency Breakaway Switch

1. Position the trailer as if it were connected to the towing vehicle. The actuator must be installed at a location on the trailer that is level to insure proper operation. Failure to properly level the unit may result in sporadic operation.
2. Select a mounting area for the actuator on the trailer that will provide easy access to the trailer brake battery, the emergency breakaway switch, and the trailer / tow vehicle electrical connector. The mounting location should give consideration to protecting the unit from road debris and from unnecessary abuse (i.e. The unit should not be used as a step).
3. The long side of the actuator must be mounted parallel to the trailer centerline so that the wiring is directed to the front of the trailer. Failure to properly align the unit may result in sporadic operation.
4. The actuator must be mounted in a horizontal position with the filler cap up.



5. Attach the actuator to the trailer by installing four (4) #10 screws through the mounting holes.
6. The trailer brake battery can be mounted at any convenient location on the trailer. Mount the battery enclosure with (2) 0.25 inch diameter screws to trailer giving consideration to the fact that the battery is heavy and requires adequate support.
7. Mount the emergency breakaway switch on the tongue of the trailer providing for a direct mechanical link between the switch plunger and the towing vehicle. Mount the switch with a 0.25-inch screw.
8. Remove the red plastic plug from the brake port on the actuator, exposing a 3/16 inch inverted flare fitting. Connect the brake line from the trailer to this fitting.

9. Fill the actuator reservoir with DOT 3 or DOT 4 brake fluid, and replace the cap. CAUTION: Always refill with new brake fluid from a sealed container. Never reuse old or dirty brake fluid. Clean off any brake fluid that may have been spilled on the trailer or actuator unit.

F. Actuator Wiring:

Connect the six wires from the trailer-mounted actuator to the trailer wiring system as follows – See Diagram

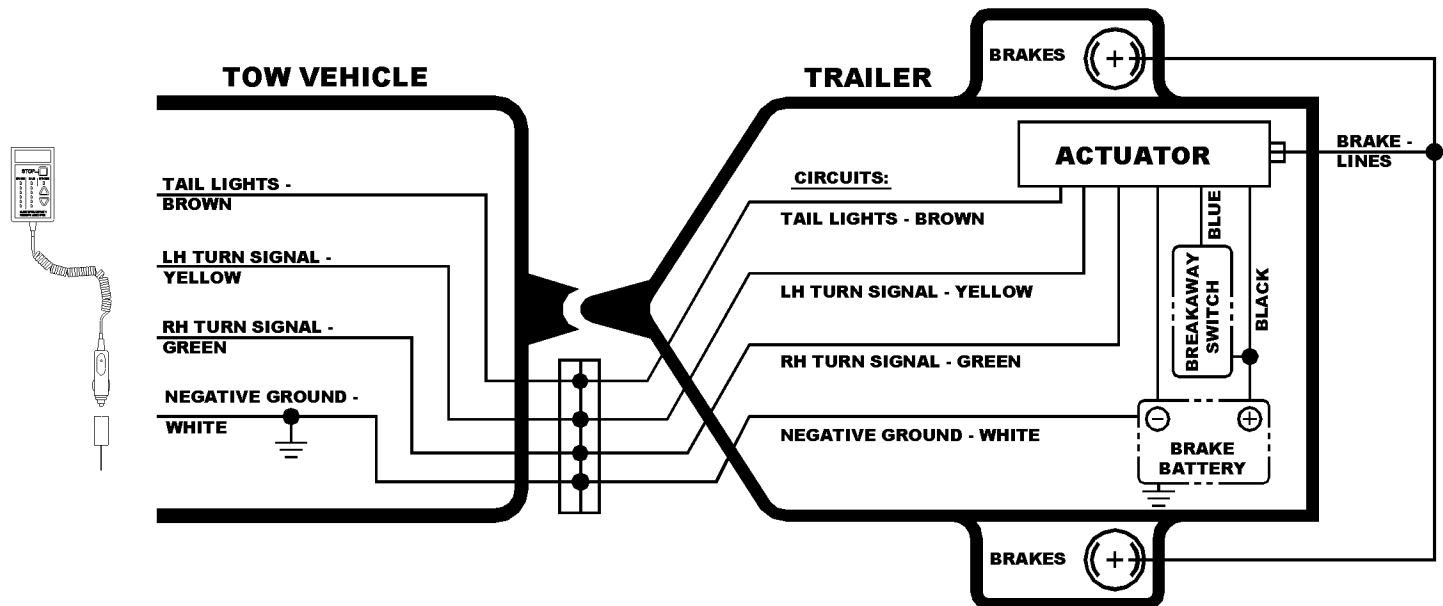
NOTE: Trailer wiring to the actuator must be 14 gauge or larger wires.

WARNING! Failure to wire the unit properly can result in damage to the trailer brake actuator.

Trailer Actuator Wires

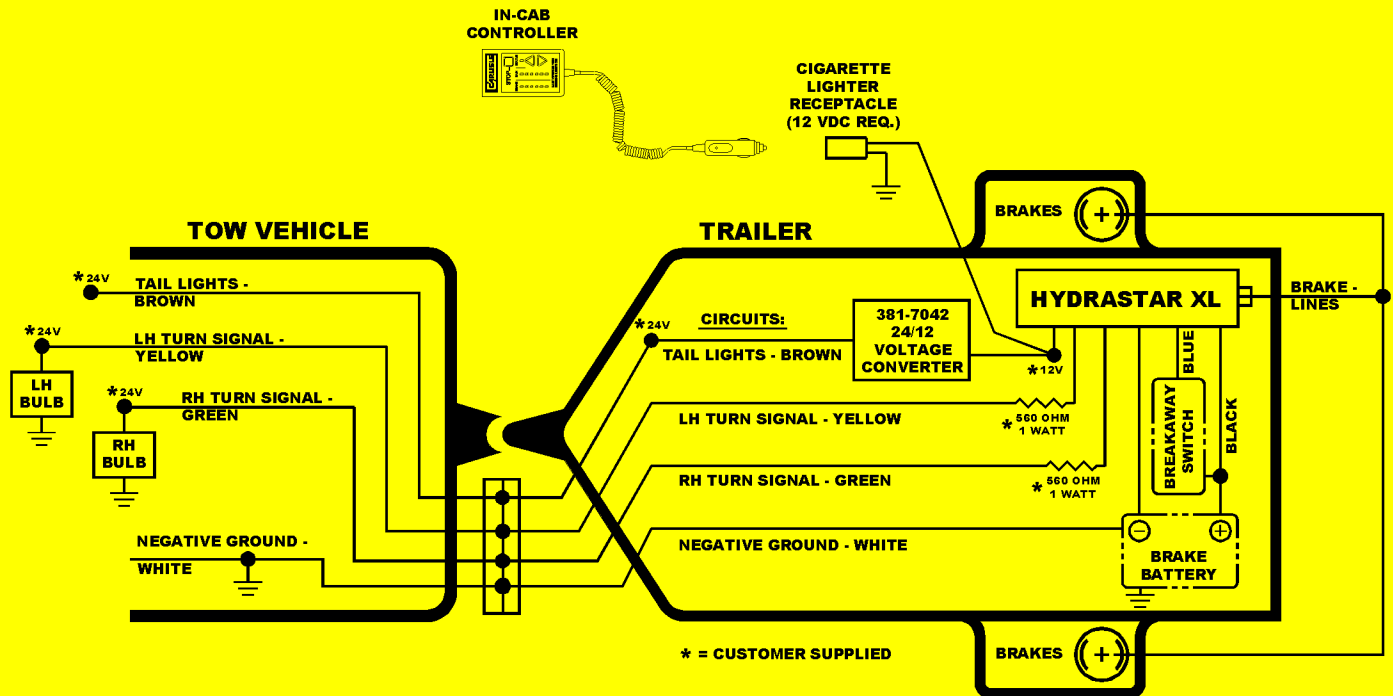
- BROWN WIRE** - Connect the brown wire from the actuator to the tail light / running light circuit on the trailer.
- YELLOW WIRE** - Connect the yellow wire from the actuator to the left turn signal / brake light circuit on the trailer.
- GREEN WIRE** - Connect the green wire from the actuator to the right turn signal / brake light circuit on the trailer.
- WHITE WIRE** - Connect the white wire from the actuator to the negative terminal (-) on the trailer battery and to both a ground connection on the trailer and to the ground wire in the wiring harness from the tow vehicle. The unit will not operate properly without a direct connection to the ground circuit on the towing vehicle. Grounding between the trailer ball and coupler without a direct connection to the towing vehicle ground circuit will result in system errors.
- BLACK WIRE** - Connect the black wire from the actuator to the positive terminal (+) on the trailer battery and to one side of the emergency breakaway switch.
- BLUE WIRE** - Connect the blue wire from the actuator only to the remaining unused emergency break away switch terminal. IT MUST NOT BE CONNECTED TO ANY OTHER CIRCUIT.

12 Volt Electrical Wiring Diagram:



NOTE: DISCONNECT ANY BRAKE CONTROLLER INSTALLED IN THE TOW VEHICLE.

24 Volt Electrical Wiring Diagram:



NOTE: DISCONNECT ANY BRAKE CONTROLLER INSTALLED IN THE TOW VEHICLE.

G. Installation Check Procedures:

Checks With Tow Vehicle Engine NOT RUNNING, Park Brake SET, In-Cab Controller Unplugged-

1. Turn on the tow vehicle running light switch. (SEE FOLLOWING NOTE) Verify that the trailer running lights are ON, and that power is being supplied to the BROWN wire on the CARLISLE actuator. Make any necessary repairs.
2. Apply and release the tow vehicle brake pedal several times. Each time the pedal is pressed the brake lights on both the tow vehicle and trailer should be illuminated, and power should be supplied to both the yellow and green wires on the actuator. Make any necessary repairs.
3. Turn OFF the tow vehicle tail / running light switch. Activate the breakaway system by pulling out the breakaway switch plunger. Verify that power is being supplied to the blue wire on the actuator, and that the trailer brakes are functioning correctly. Replace the plunger on the emergency breakaway switch.

NOTE: For Trailers with multiple tail/running lights, the tow vehicle may require a Power Taillight Converter to avoid blown fuses. Vehicles with separate brake and turn signal (amber) Lights will also require a converter.

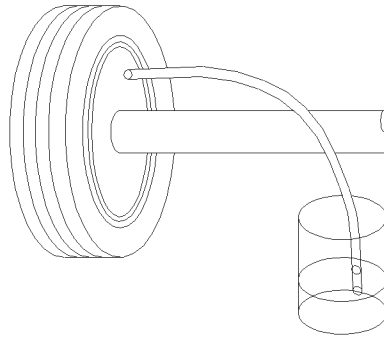
In-Cab Controller Operation -

1. With the tail/running light switch OFF, plug the in-cab controller cord into the cigarette lighter receptacle (not an accessory power receptacle). A "beeping" sound should be heard, and the in-cab controller should display a rapidly flashing yellow light. Turn on the light switch – the sound and flashing light should stop. If it continues to sound and flash, recheck for 12 volts to the BROWN wire, and/or for correct GROUND circuit wiring.
2. Repeatedly press the UP or DOWN arrow switches on the controller. From 1 to 6 green LED indicators should glow to indicate that various gain settings are being selected.
3. Select maximum gain setting (6 green LED), press and hold the square, red STOP switch. From 3 to 6 red LED indicators on the in-cab controller should glow, and the trailer brake lights should be illuminated.

4. Apply and release the tow vehicle brake pedal several times. Each time the pedal is pressed, from 1 to 3 red LED indicators should glow, and the trailer brake lights should illuminate.

Bleeding the Brakes-

1. Obtain needed materials- Plastic tubing, inside diameter to fit bleed fitting snugly.
Clear, clean container
Brake Fluid, DOT 3 or DOT 4, from new container
2. Block the wheels of the trailer and tow vehicle.
3. Starting at the rearmost trailer axle, open the bleed fitting one half (1/2) turn on the brake farthest from the actuator unit.
4. Attach one end of the plastic tubing onto the bleed fitting, and immerse the other end in a clear container partially filled with brake fluid.



5. Turn on the tow vehicle tail/running light switch, select the maximum gain setting, then activate the actuator unit by applying and holding the red button on the in-cab controller.
6. Observe the tube end in the container for air bubbles escaping, and continue until no more bubbles are emitted into the container.
7. Tighten the bleed fitting securely. Release the red button on the in-cab controller, and remove the plastic tubing.
8. **CAUTION:** During bleeding, periodically check and replace the fluid in the reservoir. Running the unit without adequate brake fluid will cause permanent damage.

Repeat Steps 3 through 6 for each brake on the trailer.

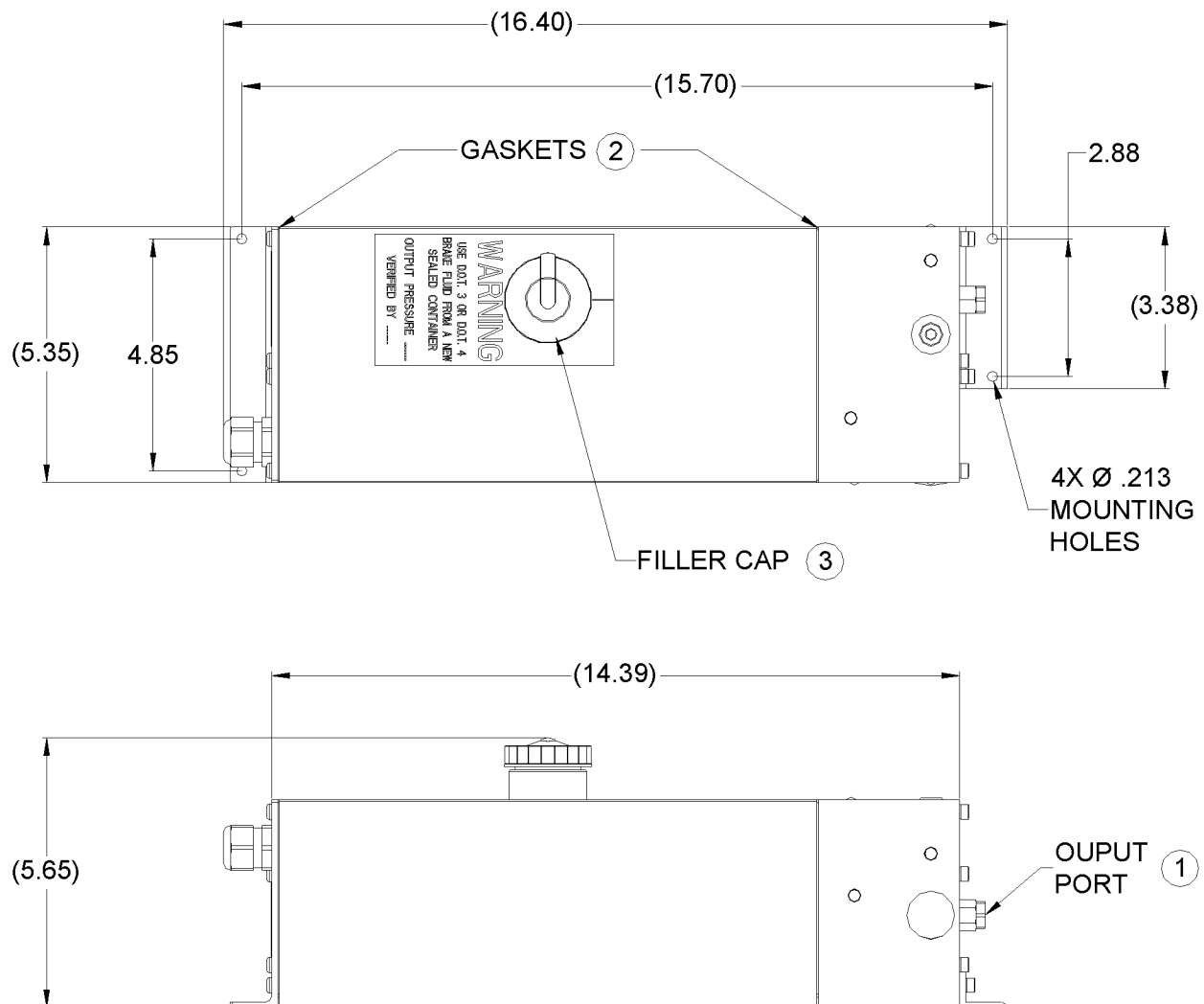
Checks with Tow Vehicle Engine Running – USE EXTREME CAUTION!

1. Select the maximum gain setting (6 Green LED) using the in-cab controller. Apply and HOLD the red button on the in-cab controller, release the park brake, start the engine and place the transmission shift lever in Forward. With the engine at low idle speed, release the brake pedal enough to allow the tow vehicle to move slowly forward. Apply a small force to the brake pedal. The trailer brakes should be felt to apply, noticeably slowing the tow vehicle. Repeat this procedure 2-3 more times.
2. Lower the gain setting to number 5 and perform Check Procedure 8 several more times, trying various levels of applied pedal force.
3. Continue checking at various gain setting steps until you are thoroughly experienced at operating the system, and have established the appropriate gain setting for the particular trailer involved.

H. DOT Inspection Note:

To demonstrate that the actuator and trailer brake system are functioning properly, adjust the up arrow on the cab controller until the system is set at its maximum gain setting (i.e. 6 green LED's illuminated). Press and hold the red STOP button on the in-cab controller and attempt to drive through the trailer brakes. This will apply the maximum power to the trailer brakes and will demonstrate to DOT personnel that the trailer brakes are functioning properly.

I. Mounting Dimensions / Replacement Parts List:



REPLACEMENT PARTS LIST			
ITEM	PART NUMBER	QTY	DESCRIPTION
1	192-7089	1	OUTPUT PORT ADAPTER ASSEMBLY 3/16 INCH INVERTED FLARE
1	304-7107	1	OUTPUT PORT ADAPTER ASSEMBLY 1/4 INCH INVERTED FLARE KIT
2	68-8631	2	GASKET
3	32-7640	1	FILLER CAP
NOT SHOWN	381-7022	1	PARTS KIT, REPLACEMENT IN-CAB CONTROLLER
NOT SHOWN	496-166	1	TRAILER BATTERY PACK COMPLETE: 12 VDC, 17 A/H, DEEP CYCLE BATTERY, ENCLOSURE, HARDWARE, BREAKAWAY SWITCH, INSTRUCTION SHEET, AND STRAPS.
NOT SHOWN	381-7042	1	24/12 VOLTAGE CONVERTER KIT

J. Trouble Shooting Guide

Controller beeps one time, repeatedly.

- **Low Battery:** Check for low battery by pulling breakaway pin. Voltage should drop from 12 volts DC to 10-11 volts DC. If drop is larger, charge or replace battery.

Controller beeps two times, repeatedly.

- **Open Circuit:** Pull breakaway pin. Make sure brakes are working. If not, check for loose or broken connections.

Controller beeps three times, repeatedly.

- **Short Circuit:** Check for bare wire or loose connections in ground. Also check for power wires making contact with each other or grounded surface.

Controller beeps four times, repeatedly.

- **Overload:** Check for too many running lights, or too many axles (more than three heavy duty).

Controller beeps five times, repeatedly.

Turn Lights On:

- Make sure that the trailer running lights are on.
- Make sure the in-cab controller is plugged into the cigarette lighter receptacle (not an accessory power receptacle).
- Check for bad connections in plugs on the trailer and towing vehicle.
- Make sure plug pins are tight and not worn from use or dragging on the ground.
- Make sure there is no corrosion. Check ground connections. Make sure trailer is grounded to towing vehicle and trailer battery.

Brakes are not aggressive enough (all green lights are illuminated).

- Make sure brake system is bled properly. (see Section G. Installation Check Procedures / Bleeding the Brakes)
- If drum brakes, adjust brakes.
- Loosen or remove attaching bolts. Remount the unit with the rear end of the Hydrastar XL™ elevated approximately 2 inches.

Unit is not putting out pressure.

- Make sure brake system is bled properly. (see Section G. Installation Check Procedures / Bleeding the Brakes)
- With no power to the unit, remove the filler cap. Place a finger in the reservoir. A screened tube, fixed in place, should be felt. If this tube is not felt, or it moves around, the unit needs repaired.
- Remove the attaching bolts. Have a second person depress the brake pedal on the towing vehicle, and hold it down. Have a second person slowly lift the rear end of the Hydrastar XL™ unit. The pitch of the motor should change as the unit is lifted higher and higher. If this does not occur, the unit need repaired.

Brakes do not apply when pressing on the brake pedal, and vehicle and trailer are not moving.

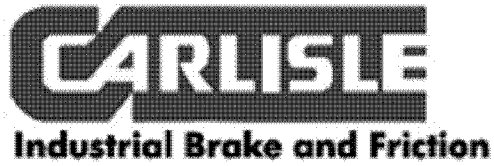
- When the vehicle and trailer are not moving, the brakes will not activate when you press on the brake pedal. Raise the gain setting until all six green lights are illuminated. Apply and HOLD the red button on the in-cab controller. All red lights will come on for an instant and then drop to one to three red lights.

Trailer “jerks” when brakes are first applied.

- Turn gain setting down, so fewer green lights are illuminated.
- If the trailer has drum brakes, back off of the brake adjustment slightly on all trailer wheels.

Trailer lights flicker.

- Battery charger in the Hydrastar XL™ is cycling on and off. This may be eliminated by running a brown wire directly from the trailer plug to the brown wire on the Hydrastar XL™ unit.



K. LIMITED WARRANTY and LIMITATION OF LIABILITY

Carlisle Industrial Brake & Friction (the "Company") warrants its trailer brake actuator products, including, but not limited to, HydraStar, HydraStar XL, and ElectraStar ("Products"), under normal use and service, to be free from defects in material and workmanship for a period not to exceed two years from the date of sale to the original consumer, or to the first retail purchaser, of a trailer or other towed device (the "Warranty"). Any receipts, proof of purchase, or other documents obtained at the time a Product manufactured by the Company is purchased from a dealer / distributor, should be retained. This Warranty is not transferable.

The obligations of the Company under this Warranty shall be limited to crediting the account of Carlisle's direct buying Distributor or OEM trailer manufacturer, replacing or repairing those Products which are determined, to the satisfaction of the Company, to be defective in material and/or workmanship, within sixty (60) days from the date of receipt of such products by the Company. Any replacements or repairs will be made at the Company's designated facility and at the Company's expense. Returned product found not to be defective will be returned at the sender's expense.

This Warranty shall not extend to any Products, or any parts thereof, which have been improperly installed, installed contrary to the provided instructions, altered, tampered with, or the engineering and design of which have been changed in any way, nor shall this Warranty extend to any defects arising from abuse, misuse, accident, improper wiring, or negligence of an installer or of the consumer. Refer to the instruction manual packed with your unit. Copies of the instruction manual are available on our website at www.carlislebrake.com. A hard copy can be ordered from Carlisle for \$15.00 by contacting customer service at 800-873-6361.

EXCEPT AS EXPRESSLY SET FORTH ABOVE, NO OTHER WARRANTY, EXPRESS OR IMPLIED, AT LAW OR IN EQUITY, IS MADE BY THE COMPANY IN RESPECT OF THE PRODUCTS, INCLUDING WITHOUT LIMITATION ANY IMPLIED WARRANTY OF MERCHANTABILITY, FITNESS FOR A PARTICULAR PURPOSE OR OTHER WARRANTY AND ANY SUCH WARRANTIES ARE EXPRESSLY DISCLAIMED.

REGARDLESS OF WHETHER ANY REMEDY SET FORTH HEREIN FAILS OF ITS ESSENTIAL PURPOSE, IN NO EVENT SHALL THE COMPANY BE LIABLE TO PURCHASE OR ANY THIRD PARTY FOR ANY LOST PROFITS, CONSEQUENTIAL, EXEMPLARY, INDIRECT, PUNITIVE, INCIDENTAL, OR SPECIAL DAMAGES OR COSTS (INCLUDING ATTORNEYS' FEES) OR LOSS OF GOODWILL RESULTING FROM ANY CLAIM (INCLUDING BUT NOT LIMITED TO ANY CAUSE OF ACTION SOUNDING IN CONTRACT, TORT, NEGLIGENCE , STRICT LIABILITY OR PRODUCTS LIABILITY), REGARDING THIS AGREEMENT, EVEN IF THE COMPANY HAS BEEN ADVISED OF THE POSSIBILITY OF SUCH DAMAGES.

Certain jurisdictions do not permit limitations on the duration of a Warranty; accordingly, the limitations included herein may not apply. This Warranty is expressly in lieu of all other express or implied Warranties and any and all other obligations or liabilities on the part of the Company. There are no Warranties which extend beyond the description on the face hereof. No dealer / distributor, employee, or representative of the Company is authorized to modify this Warranty in any way or to grant any other Warranty.

If you have a problem with your Product, see the next page.

IF YOU EXPERIENCE A PROBLEM WITH YOUR CARLISLE TRAILER BRAKE ACTUATOR

1. Trouble shoot the unit as described in the owners manual. If a copy of the manual is unavailable contact your dealer/distributor or you can download the manual off our website at www.carlislebrake.com Additional hard copies of the manual can be ordered from Carlisle customer service for \$15.00 each, call 812-336-3811.
2. If, after trouble shooting, it is believed that a valid claim exists, contact the dealer/distributor, from which the Product was purchased.
3. If it is deemed that the Product should be returned to Carlisle for inspection and warranty consideration, the dealer/distributor will make the claim through their Carlisle supplier.
4. **Carlisle can not be responsible for units returned directly by consumers.**

TO MAKE A CLAIM

1. All claims must include proof of purchase information. The required information is:
 - Copy of receipt or itemized bill showing name and address of purchaser, date of purchase.
 - Product model number and serial number. These are found on a label on the product.
 - Bills or receipts from a legitimate dealer or repair center itemizing labor charges for replacement.
2. All returns require a Return Merchandise Authorization number (RMA). Direct accounts can obtain an RMA by contacting Carlisle customer service at 812-336-3811. You will be asked to provide proof of purchase information per item #1 directly above.
3. The direct account will return the Product prepaid, and securely packed in proper packaging. The Product must be free of mud, dirt, sand, or other debris, with the brake fluid completely drained. The carton must be clearly marked with the RMA number when the Product is returned to the Company for inspection.
4. If the Company determines that the claim is valid, the Product will be repaired or replaced or credit issued to Carlisle's direct account. If a labor claim is made, Carlisle will issue credit to reimburse for up to one hour of labor, not to exceed \$70.00, to replace the defective unit. If a claim is deemed invalid and the Product is found to work properly the account will be notified and no credit will be issued for the unit or labor. Invalid Product will be returned to the submitter, freight collect, unless otherwise instructed.